

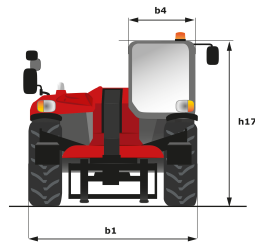
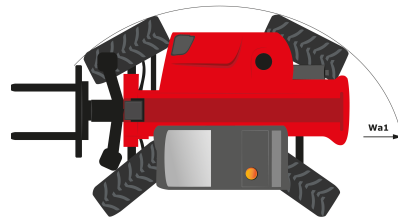
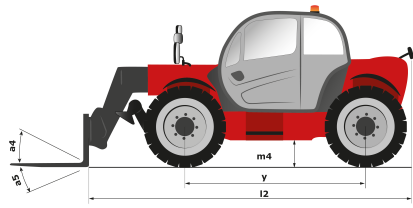
Technical sheet

# **MT-X 1840 A**

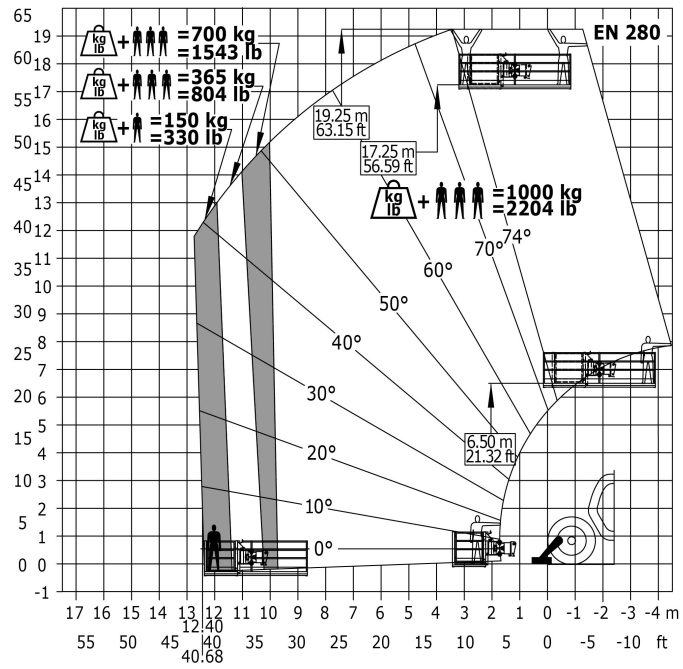
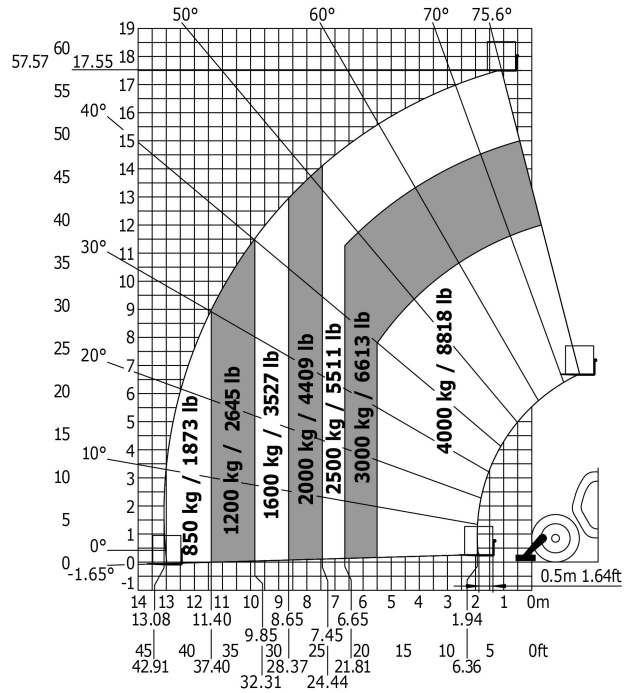
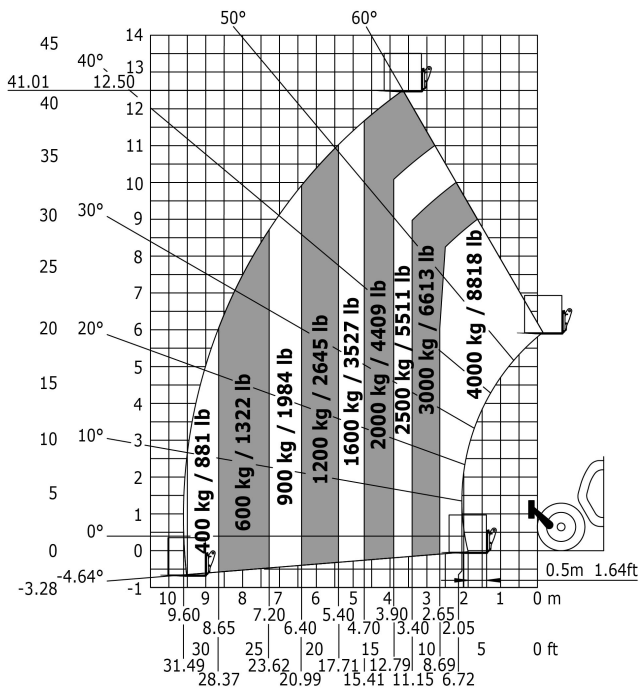
Telehandlers



Capacities	Metric	Imperial
Max. capacity	4000 kg	8800 lbs
Max. lift height	17.55 m	57 ft 7 in
Max. reach	13.08 m	42 ft 1 in
Bucket breakout force	8400 daN	18883 lbf
Weight and dimensions		
l2 - Overall length of fork carriage	6.27 m	20 ft 7 in
b1 - Overall width	2.42 m	7 ft 11 in
h17 - Overall height	2.45 m	8 ft
y - Wheelbase	3.07 m	10 ft 1 in
m4 - Ground clearance	0.42 m	1 ft 5 in
b4 - Overall cab width	0.89 m	2 ft 1 in
Wa1 - Frame outer turning radius	4.01 m	13 ft 2 in
Unladen weight (with forks)	12560 kg	27632 lbs
Standard tyres	Pneumatic	Pneumatic
Standard forks	1200x125x50	47,24x4,92x1,96
Performances		
Lifting	18 s	18 s
Lowering	14.40 s	14.40 s
Telescope extension	17.90 s	17.90 s
Retracting the telescope	16.50 s	16.50 s
Scoop	5 s	5 s
Dump	4 s	4 s
Engine		
Brand	Perkins	Perkins
Environmental standards	Stage 3A	Stage 3A
Model	1104D-44TA	1104D-44TA
Number of cylinders - Capacity	- - 4400 cm <sup>3</sup>	- - 268.50 in <sup>3</sup>
Power	101 hp / 74.50 kW	101 hp / 74.50 kW
Max. torque	400 Nm at 1400 rpm	- at 1400 rpm
Laden drawbar pull	10000 daN	22480 lbf
Transmission		
Type	Torque Converter	Torque Converter
Number of gears (forward/reverse)	4/4	4/4
Parking brake	Automatic negative parking brake	Automatic negative parking brake
Service brake	Oil-Immersed Multi-Discs on Front & Rear Axles	Oil-Immersed Multi-Discs on Front & Rear Axles
Hydraulics		
Type of pump	Gear pump	Gear pump
Hydraulic flow rate - Pressure	170 l/min - 270 bar	44.90 gpm - 3916 psi
Tank capacities		
Engine oil	175 l	38.49 US gal.
Hydraulic oil	175 l	46.20 US gal.
Fuel	140 l	36.90 US gal.
Noise & vibration		
Noise at driving position (LpA)	82 dB(A)	82 dB(A)
Noise to environment (LwA)	106 dB(A)	106 dB(A)
Vibration on hands/arms	2.5 m/s <sup>2</sup>	-
Miscellaneous		
Steering wheels / Driving wheels	8 / 4	8 / 4
Safety	Cab ROPS - FOPS Level 2	Cab ROPS - FOPS Level 2
Controls	JSM	JSM



# Load chart





Siège Social  
430 rue de l'Aubinière - 44150 Ancenis Cedex - France  
Tel: +33(0)2 40 09 10 11 - Fax: +33 (0)2 40 09 10 97  
[www.manitou.com](http://www.manitou.com)



This brochure describes versions and configuration options for Manitou products which may be fitted with different equipment. The equipment described in this brochure may be standard, optional or not available depending on version. Manitou reserves the right to change the specifications shown and described at any time and without prior warning. The manufacturer is not liable for the specifications given. For more information, contact your Manitou dealer. Non-contractual document. Product descriptions may differ from actual products. List of specifications is not comprehensive. The logos and visual identity of the company are the property of Manitou and may not be used without authorisation. All rights reserved. The photos and diagrams contained in this brochure are provided for information only.

MANITOU BF SA - Limited company with board of directors - Share capital: 39,547,824 euros - 857 802 508 RCS Nantes