

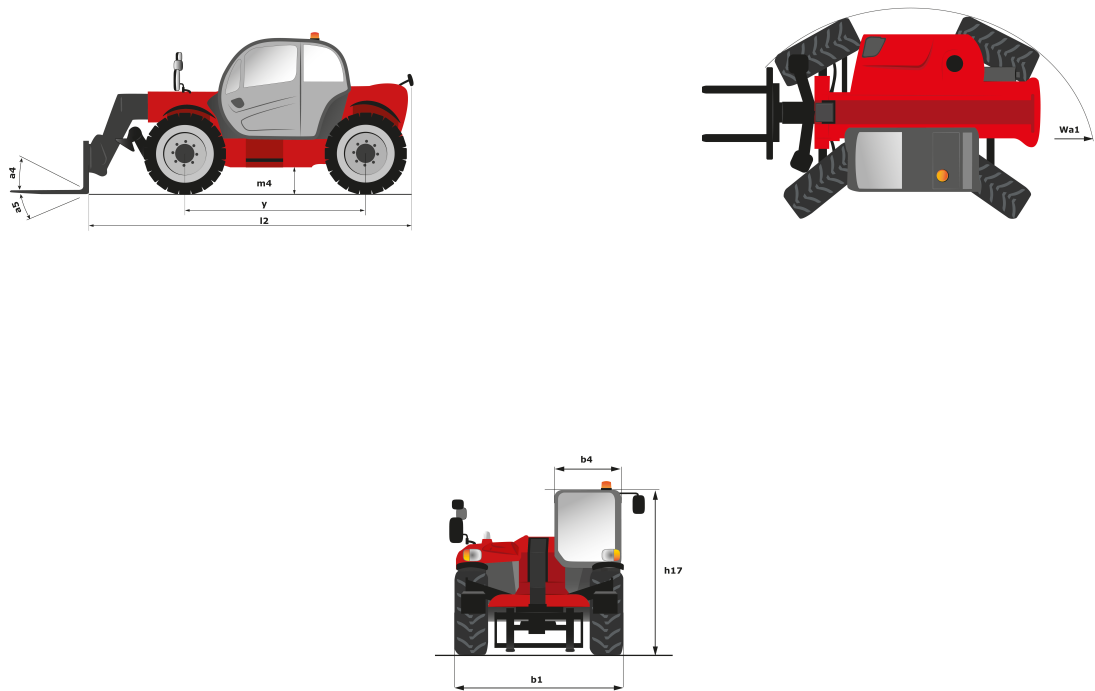
Technical sheet

MT-X 1440

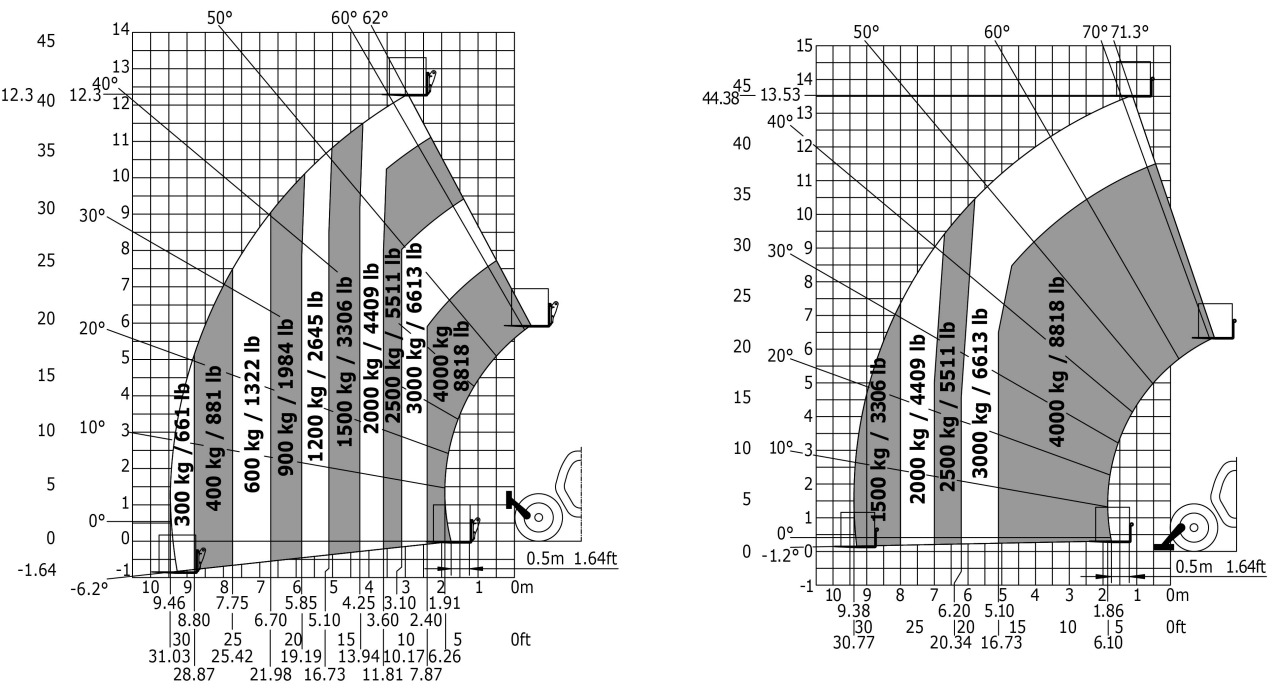
Telehandlers

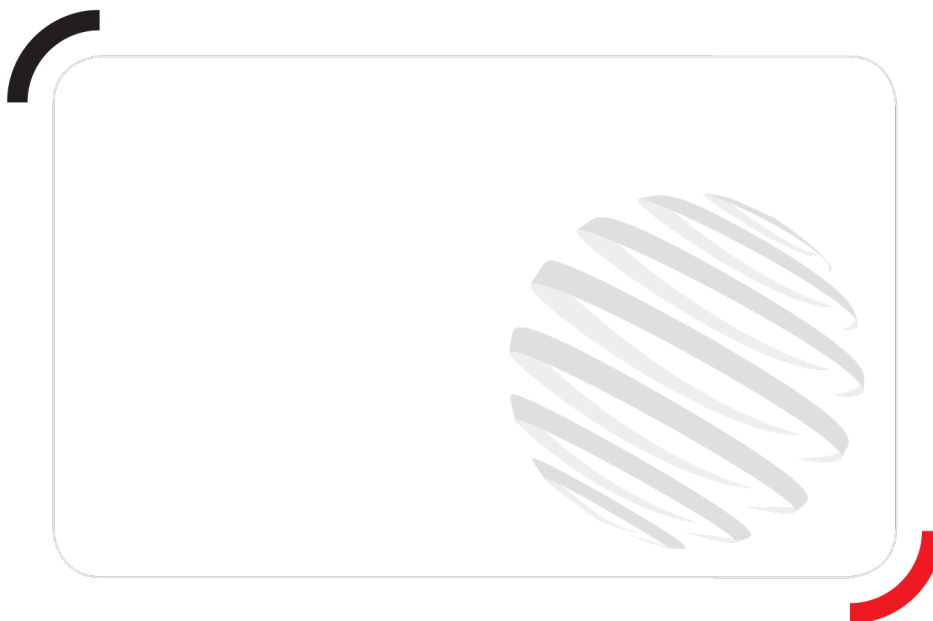


Capacities	Metric	Imperial
Max. capacity	4000 kg	8800 lbs
Max. lift height	13.53 m	44 ft 5 in
Max. reach	9.46 m	31 ft
Bucket breakout force	8000 daN	17984.71 lbf
Weight and dimensions		
l2 - Overall length of fork carriage	6.13 m	20 ft 1 in
b1 - Overall width	2.35 m	7 ft 9 in
h17 - Overall height	2.45 m	8 ft
y - Wheelbase	3.07 m	10 ft 1 in
m4 - Ground clearance	0.37 m	1 ft 3 in
b4 - Overall cab width	0.89 m	2 ft 11 in
a4 - Tilt-up angle	12 °	12 °
a5 - Tilt-down angle	114 °	114 °
Wa1 - Frame outer turning radius	3.97 m	13 ft
Unladen weight (with forks)	11115 kg	24453 lbs
Standard tyres	Pneumatic	Pneumatic
Standard forks	1200x125x50	3.11x0.5x0.2
Performances		
Lifting	15.50 s	15.50 s
Lowering	11.60 s	11.60 s
Telescope extension	16.50 s	16.50 s
Retracting the telescope	11.90 s	11.90 s
Scoop	4 s	4 s
Dump	4 s	4 s
Engine		
Brand	Perkins	Perkins
Environmental standards	Stage 3A	Stage 3A
Number of cylinders - Capacity	- - 4400 cm³	- - 268.50 in³
Power	101 hp / 74.50 kW	101 hp / 74.50 kW
Max. torque	400 Nm at 1400 rpm	295.02 ft.lbs at 1400 rpm
Laden drawbar pull	8250 daN	18546.73 lbf
Transmission		
Type	Torque Converter	Torque Converter
Number of gears (forward/reverse)	4/4	4/4
Parking brake	Automatic negative parking brake	Automatic negative parking brake
Service brake	Hydraulic	Hydraulic
Hydraulics		
Type of pump	Gear pump	Gear pump
Hydraulic flow rate - Pressure	170 l/min - 270 bar	44.90 gpm - 3916.02 psi
Tank capacities		
Engine oil	175 l	46.23 US gal.
Hydraulic oil	175 l	46.23 US gal.
Fuel	140 l	36.98 US gal.
Noise & vibration		
Noise at driving position (LpA)	82 dB(A)	82 dB(A)
Noise to environment (LwA)	106 dB(A)	106 dB(A)
Vibration on hands/arms	<2.5 m/s²	<82.25 ft/s²
Miscellaneous		
Steering wheels / Driving wheels	4 / 4	4 / 4
Safety	Standard EN 15000 Cab ROPS - FOPS Level 2	Standard EN 15000 Cab ROPS - FOPS Level 2
Controls	JSM	JSM



Load chart





Siège Social
430 rue de l'Aubinière - 44150 Ancenis Cedex - France
Tel: +33(0)2 40 09 10 11 - Fax: +33 (0)2 40 09 10 97
www.manitou.com



This brochure describes versions and configuration options for Manitou products which may be fitted with different equipment. The equipment described in this brochure may be standard, optional or not available depending on version. Manitou reserves the right to change the specifications shown and described at any time and without prior warning. The manufacturer is not liable for the specifications given. For more information, contact your Manitou dealer. Non-contractual document. Product descriptions may differ from actual products. List of specifications is not comprehensive. The logos and visual identity of the company are the property of Manitou and may not be used without authorisation. All rights reserved. The photos and diagrams contained in this brochure are provided for information only.

MANITOU BF SA - Limited company with board of directors - Share capital: 39,547,824 euros - 857 802 508 RCS Nantes